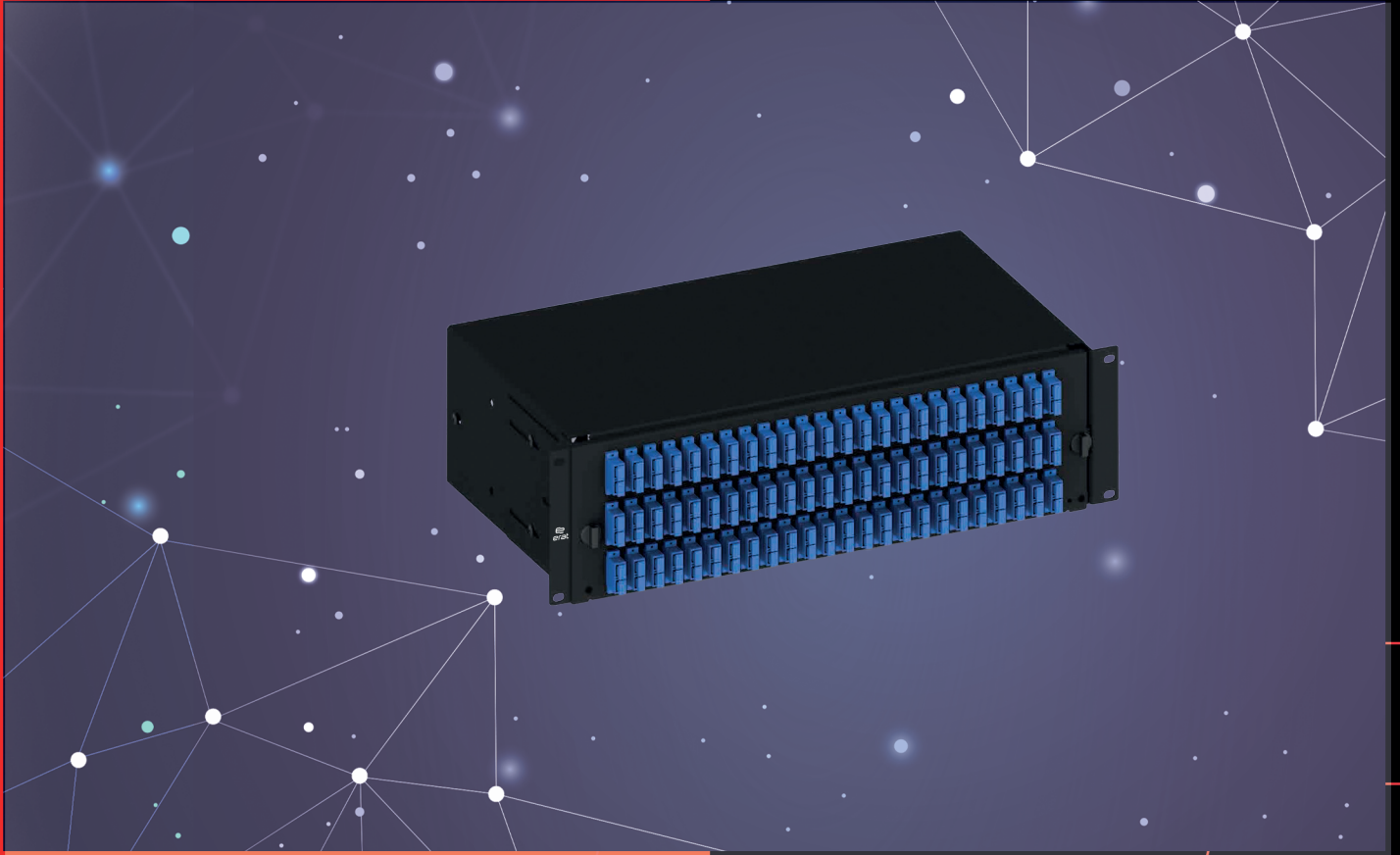


ERAT SLIDE 3U PATCH PANEL SERIES



erat

ERAT SLIDE 3U PATCH PANEL SERIES



	Product Family
	Mechanical

<input type="checkbox"/>	Standarts
<input type="checkbox"/>	19"
<input type="checkbox"/>	3 Rack Unit

Protection Rating	
	IP 10



	H 132 mm
	W 434 mm
	D 243 mm

Available Colors	
	Light Grey (RAL7035)
	Black (RAL9005)

Weight	
	Net 3,6 kg
	Gross 4,130 kg

Product Overview

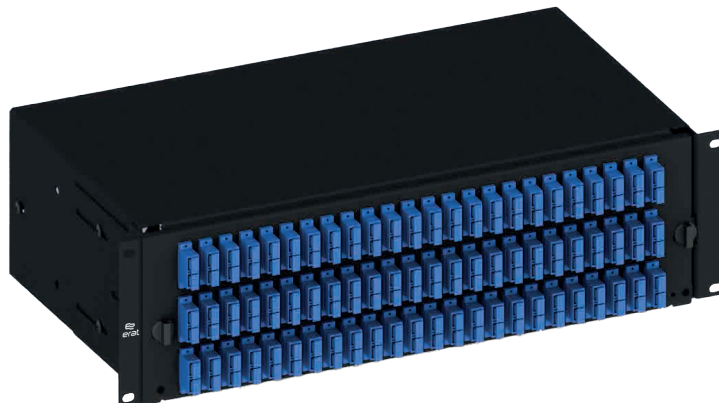
The Eratslide 3RU sliding patch panel system in its basic form is supplied with the panels unloaded without adaptors ready for you to install the adaptor of your choice. The panel can also be pre-loaded complete with the required adaptor and simple splice management kit, or preloaded with pigtailed to meet your project needs. The tray is locked in place with two simple plastic quarter turn lock to operate when fully extended the tray is designed to lower to 45°, or move the tray to the side and it will lock to lower only 10°. This provides the perfect working platform for simple installation or easy maintenance and access even after the panel is installed in the rack. This solution allows for easy access to the front patch cords as well as the splice trays and pigtailed after being pulled out. Standard panels are available empty for complete field configuration, half-loaded with adaptor plates for field termination and cable assembly installation, or stubbed with a factory-installed cable assembly of a user specified length.

Features

- Up to 144 fibres in 2RU
- Printed port numbers on the front plate
- Available with different front plates (sold separately to reduce stock value) for all type of connectors
- Adjustable depth in rack
- Rear cable entry options
- Rear Assembly option to Rack
- Light in weight and robust structure
- Different Splice tray assembly option
- Removable Adapter Plates

Specifications

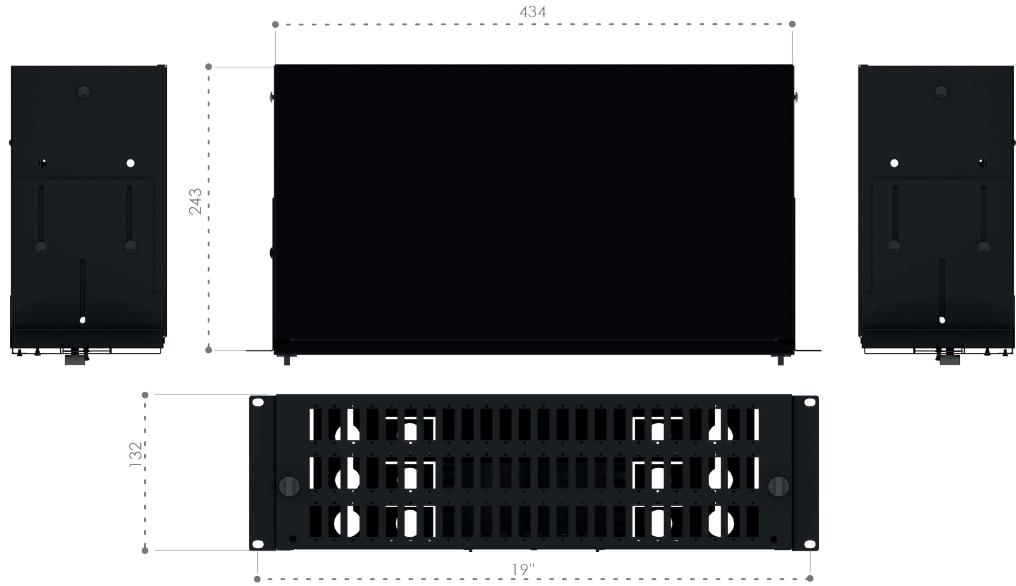
- Cold Rolled Steel Construction
- Durable textured powder coat finish available in Black(RAL9005) or Light Grey (RAL7035)
- Universal 19" rack compatibility
- Special Plastic Quarter Turn lock for tray Cable Entry 21mm(6pcs),
- Cable Entry 23mm(6pcs)
- Compliant to RoHS



ERAT SLIDE 3U PATCH PANEL SERIES



Dimensions



	48 LC Duplex or 48 E2000 Simplex or 48 SC Simplex Vertical 2RU Front Plate	102002.01-CC
	48 LC Duplex or 48 E2000 Simplex or 48 SC Simplex Horizontal 2RU Front Plate	102002.02-CC
	48 SC Duplex or 48 LC Quad Vertical 2RU Front Plate	102002.03-CC
	24 SC Duplex or 24 LC Quad Horizontal 2RU Front Plate	102002.04-CC
	48 ST or 48 FC (D-Hole) Shifted 2RU Front Plate	102002.05-CC
	96 ST or 96 FC (D-Hole) 2RU Front Plate	102002.06-CC
	48 E2000 Compact (RdM) 2RU Front Plate	102002.07-CC
	48 ST or 48 FC (D-Hole) 2RU Front Plate	102002.08-CC
	72 LC DX or 72 E2000 SX yada 72 SC SX 2RU Front Plate	102002.09-CC
	96 LC DX or 96 E2000 SX yada 96 SC SX 2RU Front Plate	102002.10-CC