

19" ERATline 400P Series

Free Standing Cabinets

Width: 800 mm

Depth: 1000 mm



Production Standards:

- ISO 9001:2015 - Quality Management System
- ISO 14001:2015 - Environmental Management System

Compliance:

- EN 61587-1 Mechanical structures for electronic equipment - Tests for IEC 60917 and IEC 60297 series
- Climatic and Environment: EN 61587-1/4.2, IEC60068-2-1, IEC60068-2-2, IEC60068-2-30
- Static Mechanical Load Lifting: EN 61587-1/5.2.1
- Static Mechanical Load Stiffness: EN 61587-1/5.2.2
- Dynamic Mechanical Load Vibration and Shock, Impact: EN61587-1/5.3.1, EN61587-1/5.3.3, IEC60068-2-6, IEC60068-2-27
- Earth Bond: EN61587-1/6.2
- Flammability: EN 61587-1/6.3
- Degrees of Protection Provided by Enclosures (Ip Code): IP20
- EN 13501-1+ A1- Epoxy Powder coated compliant to Fire classification of construction products and building elements Part 1: Classification using data from reaction to fire tests
- Epoxy Powder coating tested as per EN ISO 9227 and ASTM B 117 Corrosion tests in artificial atmospheres - Salt spray tests; minimum 1000 hours
- EN ISO 2409 Paints and varnishes - Cross-cut test
- EN ISO 2178 Non-magnetic coatings on magnetic substrates
- Measurement of coating thickness - Magnetic method
- RoHS Compliancy according to 2011/65/EU
- CE Compliant to EN 60950-1

Free Standing ERATline 400P Series Server Cabinets with Perforated Doors 42U/47U W800xD1000 mm

- Multi folded modular design clamped with screws, coated with RAL 9005 epoxy polyester powder.
- The front door is a multi-folded metallic, 63% perforated and double opening. The rear door is also metallic and perforated. Both doors have single point barrel lock systems. Also the rack has removable and lockable lockable side panels.
- 1 set of 19" front depth adjustable equipment mounting rails & 1 set of 19" rear fixed equipment mounting rails, U height numbered. Vertical cable organiser is available as an accessory.
- Removable cable entry panels connected with micro joints are located at the bottom side. PVC and brushed cable entrances are located at the top side. The accessory sliding cable entry can be inserted at the bottom side during the field applications.
- Ventilation slots for active and passive ventilation are available on the top side (2 or 4 fans applicable).
- Maximum load capacity up to 600 kg.
- Four M10 adjustable feet group included, replaceable by a castor set (optional).

Maximum load capacity up to 600 kg.



Standard



Optional



19" ERATline 400P Series

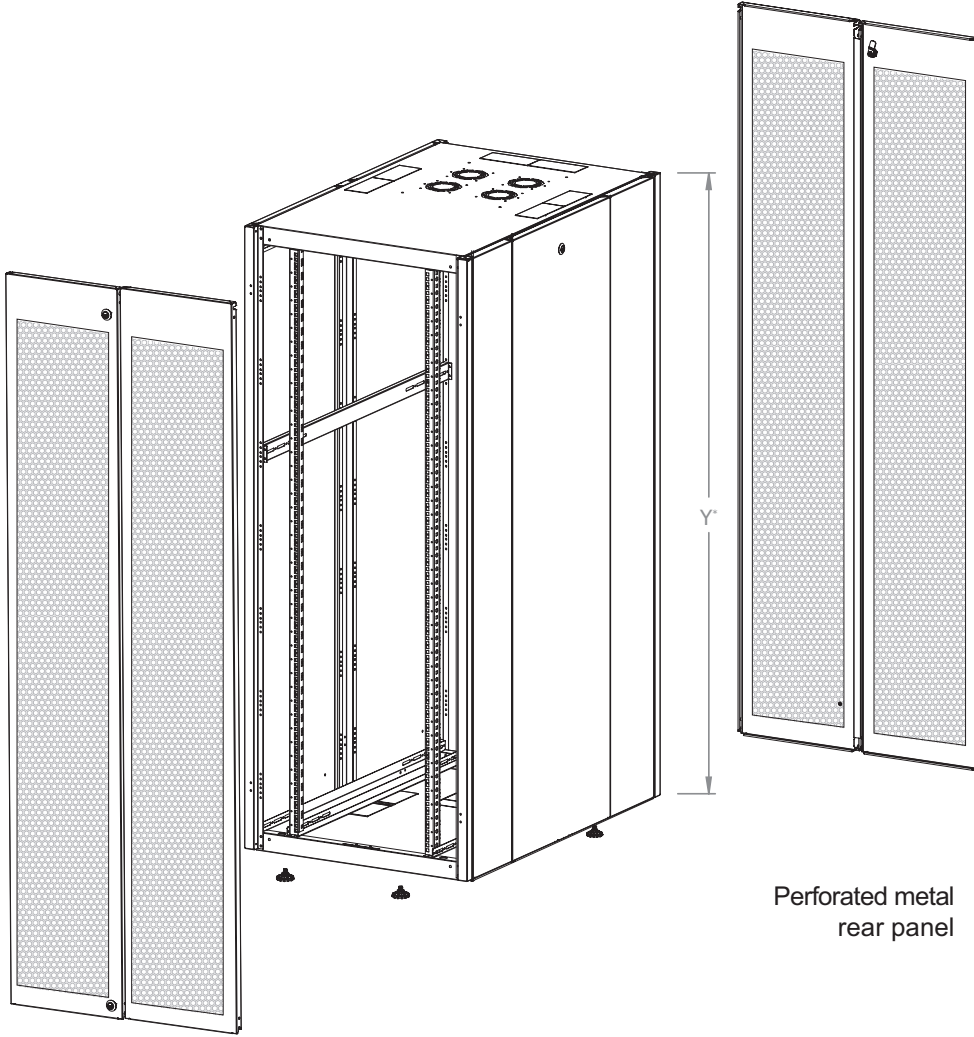
Free Standing Cabinets

Width: 800 mm

Depth: 1000 mm



Erat Cabinets and Accessories



Perforated metal front door

Perforated metal rear panel

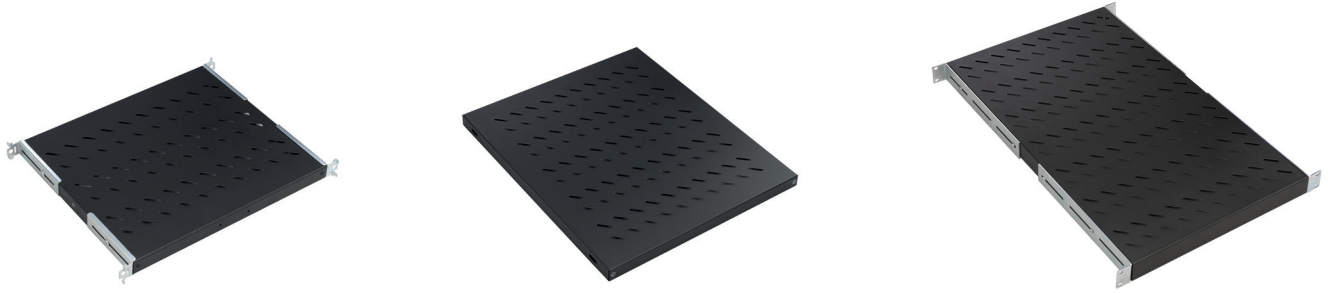


19" ERATline 400P Series Free Standing Cabinets W800 x D1000 mm

Dimensions WxDxH mm	Package Size WxDxH mm	Product Description
800x1000x2010	850x1050x2020	42U W800 x D1000 mm Free Standing Cabinet - Perforated Door
800x1000x2232	850x1050x2242	47U W800 x D1000 mm Free Standing Cabinet - Perforated Door

* H length can be checked from the product dimensions.

19" ERATline 400/400P Series Free Standing Cabinets Accessories



Frequently Used Accessories 19" ERATline 400/400P Series Free Standing Cabinet Dimensions (W:Width mm D:Depth mm)

Fixed Shelves Compatible with Lande Cabinets	W:600 x D:600 mm	W:600 x D:800 mm	W:600 x D:1000 mm	W:800 x D:600 mm	W:800 x D:800 mm	W:800 x D:1000 mm
Universal Fixed Compatible with All Cabinets	W:600 x D:600 mm	W:600 x D:800 mm	W:600 x D:1000 mm	W:800 x D:600 mm	W:800 x D:800 mm	W:800 x D:1000 mm
Heavy Duty Type Shelves	-	-	W:600 x D:1000 mm	-	-	W:800 x D:1000 mm

**CC= Color codification- Replace CC with BL for Black RAL 9005 Color- and Replace CC with LC for Light Grey RAL 7035 Color.



Frequently Used Accessories 19" ERATline 400/400P Series Free Standing Cabinet Dimensions (W:Width mm D:Depth mm)

	W:600 x D:600 mm	W:600 x D:800 mm	W:600 x D:1000 mm	W:800 x D:800 mm	W:800 x D:1000 mm
Sliding Shelves	W:600 x D:600 mm	W:600 x D:800 mm	-	W:800 x D:800 mm	-
Heavy Duty Type Sliding Shelves	-	-	W:600 x D:1000 mm	-	W:800 x D:1000 mm

**CC= Color codification- Replace CC with BL for Black RAL 9005 Color- and Replace CC with LC for Light Grey RAL 7035 Color.



Frequently Used Accessories 19" ERATline 400/400P Series Free Standing Cabinet Dimensions (W:Width mm D:Depth mm)

	W:600 x D:600 mm	W:600 x D:800 mm	W:600 x D:1000 mm	W:800 x D:800 mm	W:800 x D:1000 mm
2 Fan Module On/Off Switched	W:600 x D:600 mm	W:600 x D:800 mm	W:600 x D:1000 mm	W:800 x D:800 mm	W:800 x D:1000 mm
2 Fan Module Thermostat Switched	W:600 x D:600 mm	W:600 x D:800 mm	W:600 x D:1000 mm	W:800 x D:800 mm	W:800 x D:1000 mm
4 Fan Module On/Off Switched	W:600 x D:600 mm	W:600 x D:800 mm	W:600 x D:1000 mm	W:800 x D:800 mm	W:800 x D:1000 mm
4 Fan Module Thermostat Switched	W:600 x D:600 mm	W:600 x D:800 mm	W:600 x D:1000 mm	W:800 x D:800 mm	W:800 x D:1000 mm
Horizontal Cable Management Panel 19" 1U 5 rings	W:600 x D:600 mm	W:600 x D:800 mm	W:600 x D:1000 mm	W:800 x D:800 mm	W:800 x D:1000 mm

19" ERATline 400/400P Series Free Standing Cabinets Accessories



Frequently Used Accessories						
19" ERATline 400/400P Series Free Standing Cabinet Dimensions (W:Width mm D:Depth mm)						
ERT-KBNT	W:600 x D:600 mm	W:600 x D:800 mm	W:600 x D:1000 mm	W:800 x D:800 mm	W:800 x D:1000 mm	
Vertical Cable Manager	-	-	-	✓	✓	

**XX is the U height of Vertical cable manager, according to selected height of cabinet, please define U height while creating order.



Frequently Used Accessories						
19" ERATline 400/400P Series Free Standing Cabinet Dimensions (W:Width mm D:Depth mm)						
ERT-KBNT	W:600 x D:600 mm	W:600 x D:800 mm	W:600 x D:1000 mm	W:800 x D:600 mm	W:800 x D:800 mm	W:800 x D:1000 mm
Caster Group; 2 with breaks, 2 without breaks	✓	✓	✓	✓	✓	✓



Frequently Used Accessories						
19" ERATline 400/400P Series Free Standing Cabinet Dimensions (W:Width mm D:Depth mm)						
ERT-KBNT	W:600 x D:600 mm	W:600 x D:800 mm	W:600 x D:1000 mm	W:800 x D:600 mm	W:800 x D:800 mm	W:800 x D:1000 mm
PDU 6 Way Schuko Type, 16A Fused	✓	✓	✓	✓	✓	✓



Frequently Used Accessories						
19" ERATline 400/400P Series Free Standing Cabinet Dimensions (W:Width mm D:Depth mm)						
ERT-KBNT	W:600 x D:600 mm	W:600 x D:800 mm	W:600 x D:1000 mm	W:800 x D:600 mm	W:800 x D:800 mm	W:800 x D:1000 mm
Mounting Hardware, Fixing M6 Cage Nut Set of 20	✓	✓	✓	✓	✓	✓