

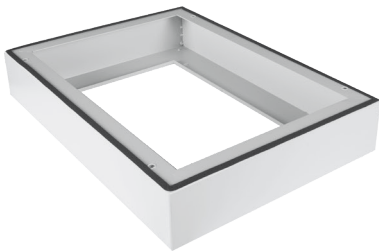
19" ERATline 500-O Safebox Outdoor Double Skin IP55 Cabinets Accessories



Fan Module with Analog Thermostat Switch - 220 V AC		
Product Model	Dimensions WxDxH mm	Description
Accessory	495x175x50	Single fan module with analog thermostat switch, filtered
Accessory	495x175x50	Double fan module with analog thermostat switch, filtered



Pole Mounting Kit		
Product Model	Dimensions WxDxH mm	Description
Accessory	598x204x80	Pole mounting kit, for 4-6" diameter poles, galvanized



Floor Mounting Applications		
Product Model	Dimensions WxDxH mm	Description
Accessory	600x300x100	Plinth H:100 mm W:600 x D300 RAL 7035 Light Grey
Accessory	600x450x100	Plinth H:100 mm W:600 x D450 RAL 7035 Light Grey
Accessory	600x600x100	Plinth H:100 mm W:600 x D600 RAL 7035 Light Grey

19" ERATline 500-O Safebox Outdoor Double Skin IP55 Cabinets

Width: 600 mm
Depth: 300/450/600 mm

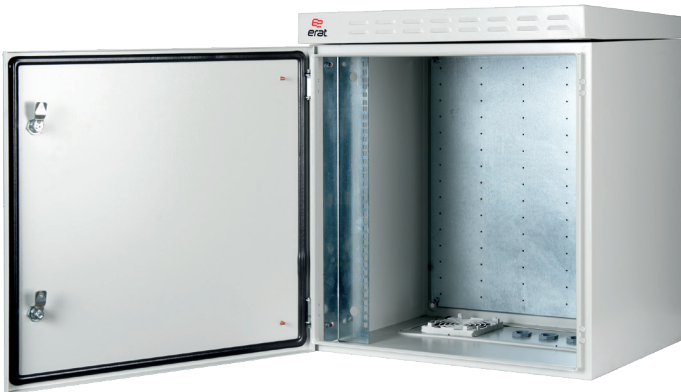


Production Standards:

- ISO 9001:2015 - Quality Management System
- ISO 14001:2015 - Environmental Management System

Compliance:

- EN 61587-1 Mechanical structures for electronic equipment - Tests for IEC 60917 and IEC 60297 series
- Climatic and Environment: EN 61587-1/4.2, IEC60068-2-1, IEC60068-2-2, IEC60068-2-30
- Static Mechanical Load Lifting: EN 61587-1/5.2.1
- Static Mechanical Load Stiffness: EN 61587-1/5.2.2
- Dynamic Mechanical Load Vibration and Shock, Impact: EN61587-1/5.3.1, EN61587-1/5.3.3, IEC60068-2-6, IEC60068-2-27
- Earth Bond: EN61587-1/6.2
- Flammability: EN 61587-1/6.3
- Degrees of Protection Provided by Enclosures (Ip Code): IP55
- EN 13501-1+ A1- Epoxy Powder coated compliant to Fire classification of construction products and building elements Part 1: Classification using data from reaction to fire tests
- Epoxy Powder coating tested as per EN ISO 9227 and ASTM B 117 Corrosion tests in artificial atmospheres - Salt spray tests; minimum 1000 hours
- EN ISO 2409 Paints and varnishes - Cross-cut test
- EN ISO 2178 Non-magnetic coatings on magnetic substrates
- Measurement of coating thickness - Magnetic method
- RoHS Compliancy according to 2011/65/EU
- CE Compliant to EN 60950-1



Wall mounted maximum load capacity up to 300 kg.



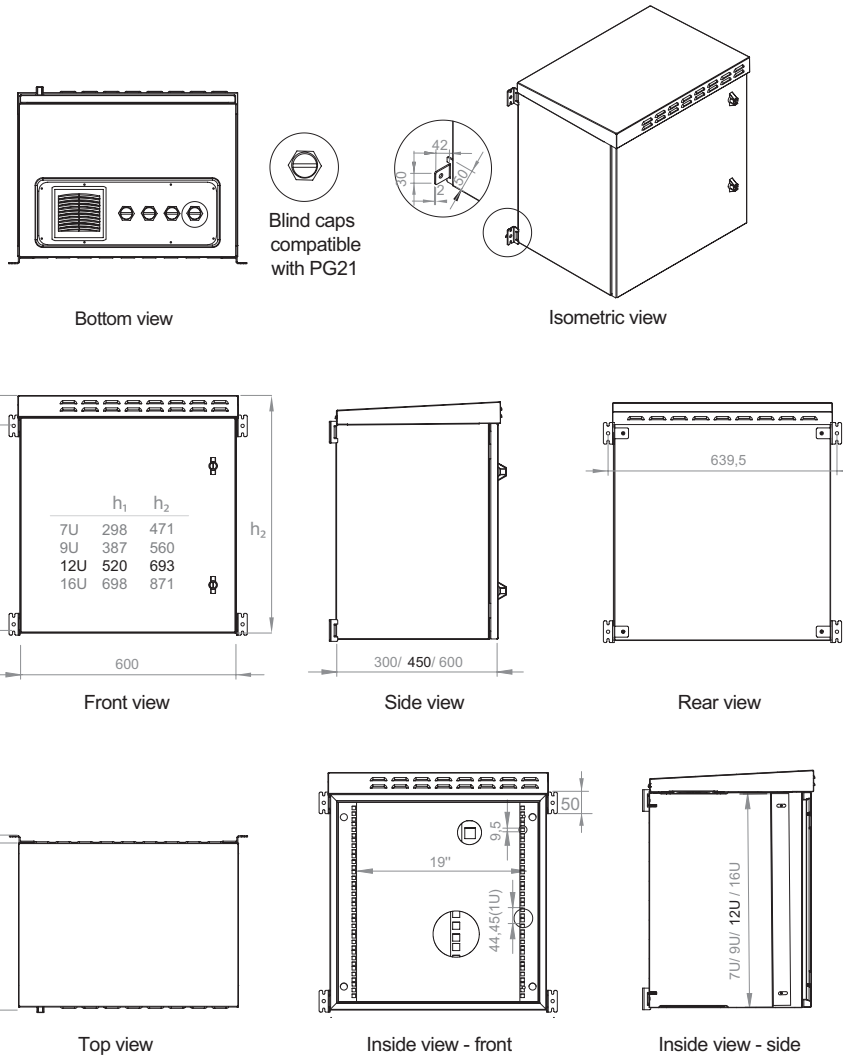
ERATline 500-O Series Safebox Outdoor Double Skin IP55 Cabinets

7U/9U/12U/16U W600 x D300/450/600 mm

- Mono-block welded construction, coated with polyester type powder, on RAL 7035 - Light Grey.
- 7U - 9U have one key-locking quarter-turn wing knob, 12U - 16U have two key-locking quarter-turn wing knobs.
- 1 set of 19" front equipment mounting rails.
- 4 x PG21 cable entries blind plugs.
- The safebox has one filtered air inlet and a filtered passive ventilation and hot air exhaust. Where required the filterers can be replaced with an exhaust fan or an an exhaust fan with thermostat (optional accessories).
- Wall mounting brackets and grounding cable are included.
- The metallic front door has polyurethane sealing gasket compatible with EN 60529 IP54/IP55 class protection. IP code can be upgraded up to IP66 by replacing the fan ventilation slots with cover plates.
- The maximum load capacity is up to 300 kg as a wall mounted and up to 800 kg as a free standing.
- Safebox can be floor mounted when using a plinth.
- An optional rear mounting plate can be used to host industrial or electrical equipment that can not be mounted on 19" rails (optional).

19" ERATline 500-O Safebox Outdoor Double Skin IP55 Cabinets

Width: 600 mm
Depth: 300/450/600 mm



19" ERATline 500-O Safebox Outdoor Double Skin IP55 W600 x D300 mm Cabinets		
Dimensions WxDxH mm	Package Size WxDxH mm	Product Description
600x300x471	650x350x487	7U 19" W600 x D300 mm Outdoor Double Skin IP55 Cabinet
600x300x560	650x350x576	9U 19" W600 x D300 mm Outdoor Double Skin IP55 Cabinet
600x300x693	650x350x709	12U 19" W600 x D300 mm Outdoor Double Skin IP55 Cabinet
600x300x871	600x350x887	16U 19" W600 x D300 mm Outdoor Double Skin IP55 Cabinet

19" ERATline 500-O Safebox Outdoor Double Skin IP55 W600 x D450 mm Cabinets		
Dimensions WxDxH mm	Package Size WxDxH mm	Product Description
600x450x471	650x500x487	7U 19" W600 x D450 mm Outdoor Double Skin IP55 Cabinet
600x450x560	650x500x576	9U 19" W600 x D450 mm Outdoor Double Skin IP55 Cabinet
600x450x693	650x500x709	12U 19" W600 x D450 mm Outdoor Double Skin IP55 Cabinet
600x450x871	600x500x887	16U 19" W600 x D450 mm Outdoor Double Skin IP55 Cabinet

19" ERATline 500-O Safebox Outdoor Double Skin IP55 W600 x D600 mm Cabinets		
Dimensions WxDxH mm	Package Size WxDxH mm	Product Description
600x600x471	650x650x487	7U 19" W600 x D600 mm Outdoor Double Skin IP55 Cabinet
600x600x560	650x650x576	9U 19" W600 x D600 mm Outdoor Double Skin IP55 Cabinet
600x600x693	650x650x709	12U 19" W600 x D600 mm Outdoor Double Skin IP55 Cabinet
600x600x871	600x650x887	16U 19" W600 x D600 mm Outdoor Double Skin IP55 Cabinet